



Tech Craft

Metal Industries LLC

2022

www.techcraftdubai.com



PRE-QUALIFICATION PROFILE
METAL WORK SERVICES



TABLE OF CONTENTS

TOTAL SOLUTIONS	3
PROJECT CONSULTANCY/MANAGEMENT	4
OUR SERVICES	5
STAINLESS STEEL FABRICATION	6
STRUCTURAL STEEL WORKS	12
ALUMINUM FABRICATION	20
METAL WORKS	27
Brass Work	31
OUR CLIENTS	32
PRODUCTS ORGANIZATION CHART	33
OUR BELIEVE	34
LIST OF MACHINES	35
COMMERCIAL LICENSE	36
CONTACT US	37

TOTAL SOLUTIONS

Tech Craft Metal Industries LLC is a custom metal fabrication solutions industry designed to meet all your needs, company with a fully-equipped, industry-leading facility located in Dubai Investment Park 2, Dubai.

We value our successful working relationships with the local and International clients and thank you for your interest in Tech Craft. We are in the "Fabrication - Supply - Installation" business that offers total solutions for architectural and ornamental works, Stainless steel, Aluminum and metal fabrication works. With just few years in the business, Tech Craft has emerged as one of the leading supplier and total solution provider in Inter Emirates and to various G.C.C. countries.

The main concern of the company is to fulfill and satisfy the needs and requirements of our clients, so we precisely utilize the latest technologies, adhere to the latest standards and comply with technical and safety specifications of the manufacturers, clients and regulatory authorities.



PROJECT CONSULTANCY/MANAGEMENT

Proposing suitable designs and material for consideration of the building architecture, geographical, and statutory requirements. This also includes the preparation of bill of quantity, schematic and family designs - on the basis of the layout plan of the building.

Floating tenders, selection of potential suppliers, short-listing suppliers, scrutinizing and finalisation of samples and materials, and value engineering. Quality survey at suppliers' factories, during the execution and final quality and quantity verification process.

Verification of as-built drawings, operation and maintenance manuals, taking over certificate, warranty certificate, product data sheets, and re-order formats.



OUR SERVICES

STAINLESS STEEL FABRICATION
STRUCTURAL STEEL WORKS
ALUMINUM FABRICATION
METAL WORKS
BRASS WORK



STAINLESS STEEL FABRICATION

Project Title:
THE BUSINESS VILLAGE

Consultant:
LC CONSULTANTING CIVIL & STRUCTURAL ENGINEERS

Main Contractor:
BELHASA ENGINEERING & CONTRACTING CO.LLC

MATERIAL SPECIFICATIONS

- 1: PANEL: 1.5mm thick stainless steel (304) brushed finish.
- 2: BRACKET: 1.5mm thick G.I sheet, mill finish.
- 3: BOLT: 25mm diameter x 50mm thick stainless-steel plate M8 anchor bolt.

GLASS CLADDING



STAINLESS STEEL FABRICATION

Project Title:

BURJ DUBAI DEVELOPMENT - THE DUBAI MALL

Consultant:

DP ARCHITECTS PTE LTD.

Main Contractor:

JOINT VENTURE -

DUTCO BALFOUR BEATTY & GHANDI

CONSOLIDATED CONTRACTORS INTERNATIONAL CO.

MATERIAL SPECIFICATIONS

1: HANDRAIL: Pipe 38x2mm thick stainless-steel hairline finish.

2: COVER PLATE: 1.5mm thick stainless- steel sheet.

3: SUPPORT: Stainless steel rod, 12mm thick.

4: BASE: 6mm thick stainless-steel sheet.

5: HEIGHT: 900mm from finish floor level.

WALL-MOUNTED HANDRAIL



STAINLESS STEEL FABRICATION

Project Title:

MIRDIF CITY CENTRE

MATERIAL SPECIFICATIONS

- 1: HAND RAIL: Pipe $\text{Ø}50.8 \times 2\text{mm}$ thick Stainless Steel (304) Finish.
- 2: POST: Pipe $\text{Ø}42.2 \times 2.7\text{mm}$ thick Stainless Steel (304) Finish.
- 3: BRACKET: 8mm thick stainless Steel (304) Polish Finish.
- 4: PANEL: 11.10mm thick laminated tempered clear glass.
- 5: HEIGHT: 1100 millimeters from finish floor level.

WALL-MOUNTED HANDRAIL



STAINLESS STEEL FABRICATION

Project Title:
MIRDIF CITY CENTRE

MATERIAL SPECIFICATIONS

- 1: HAND RAIL: Pipe O50.8x2mm thick Stainless Steel (304) Finish.
- 2: FOOT RAIL: Pipe O50.8x2mm thick Stainless Steel (304) Finish.
- 3: PANEL: 21.14mm thick Laminated tempered clear glass.
- 4: BASE : Mild Steel U-147x49.1x8mm thick build-up U- channel
Painted Finish.
- 5: HEIGHT: 1200 millimeters from finish floor level.

WALL-MOUNTED HANDRAIL



STAINLESS STEEL FABRICATION

Project Title:

BURJ DUBAI DEVELOPMENT - THE DUBAI MALL

Consultant:

DP ARCHITECTS PTE LTD.

Main Contractor:

JOINT VENTURE -

DUTCO BALFOUR BEATTY & AL GHANDI

CONSOLIDATED CONTRACTORS INTERNATIONAL CO.

MATERIAL SPECIFICATIONS:

1. STRINGER: SS flat bar 75x10mm THK.
2. RUNG: SS rod 20mm THK.
3. SAFETY HOOPS: SS flat bar 50x3mm THK.
4. BASE PLATE: 8mm thick stainless-steel sheet.
5. HEIGHT: 6000mm from finish floor level.

WALL-MOUNTED HANDRAIL



STAINLESS STEEL FABRICATION

Project Title:

THE BUSINESS VILLAGE

Consultant:

LC CONSULTANTING CIVIL & STRUCTURAL ENGINEERS

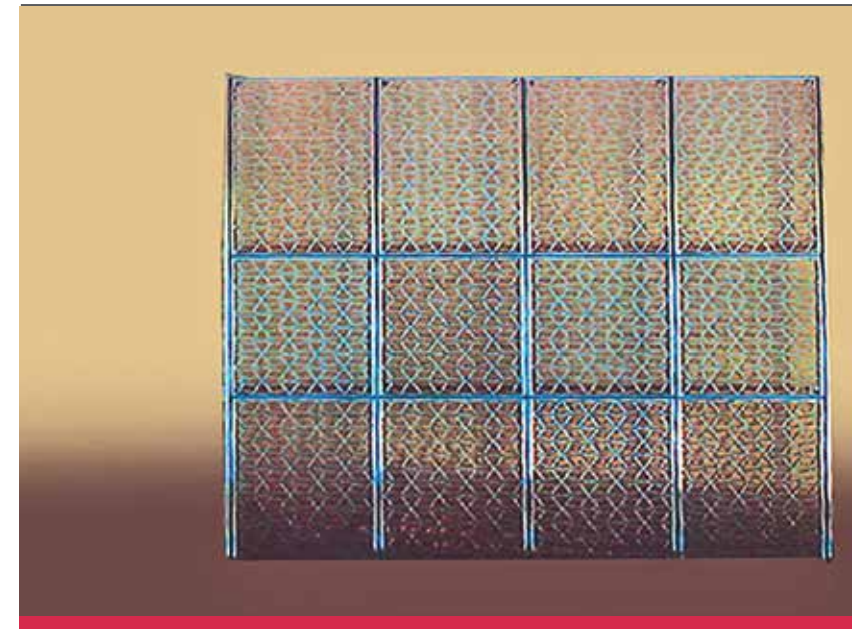
Main Contractor:

BELHASA ENGINEERING & CONTRACTING CO.LLC

MATERIAL SPECIFICATIONS

- 1: MASHRABIYA: 18x18mm thick cast aluminum, powder-coated finish.
- 2: FRAME: Stainless steel (316) T-section, brushed finish.
- 3: BRACKET: 15mm thick stainless steel (316) plate, brushed finished.
- 4: END PLATE: 10mm thick stainless (316) plate, brushed finished.
- 5: ANCHOR: MKT wedge anchor B10-45/120 stainless steel.

MASHRABIYA



STRUCTURAL STEEL WORKS

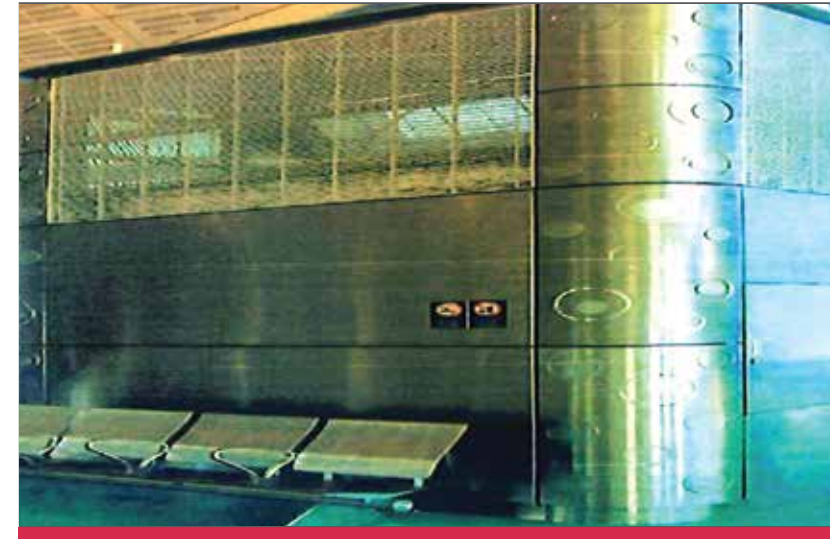
Project Title:
DUBAI METRO
Consultant:
WS ATKINS

Main Contractor:
JOINT VENTRURE-JAPAN TURKEY METRO

MATERIAL SPECIFICATIONS

- 1: MASHRABIYA: 18x18mm thick cast aluminum, powder-coated finish.
- 2: FRAME: Stainless steel (316) T-section, brushed finish.
- 3: BRACKET: 15mm thick stainless steel (316) plate, brushed finished.
- 4: END PLATE: 10mm thick stainless (316) plate, brushed finished.
- 5: ANCHOR: MKT wedge anchor B10-45/120 stainless steel.

WALL CLADDING



STRUCTURAL STEEL WORKS

Project Title:

PRIVATE VILLA - NAD AL SHIBA SECOND

Consultant:

HSA Architects, Engineering Consultants

Main Contractor:

TAK CONSTRUCTION LLC

MATERIAL SPECIFICATIONS:

1. 2mm Thick SS Brush Finish Sheet .
2. 25X25mm 3mm Thick L Angle Fixing Sides
3. Gap Between L angle & Marbel Filled by Silcon

STAINLESS STEEL FLOOR GRATING



STRUCTURAL STEEL WORKS

Project Title:

PRIVATE VILLA - NAD AL SHIBA SECOND

Consultant:

HSA Architects, Engineering Consultants

Main Contractor:

TAK CONSTRUCTION LLC

MATERIAL SPECIFICATIONS:

1. 17.52mm Clear Laminated Tempered Glass.
2. 1.5mm Thick SS Top Rail (U Type)
3. HEIGHT: 1100mm from finish floor level.

STAIRCASE GLASS HANDRAIL



STRUCTURAL STEEL WORKS

Project Title:

BURJ DUBAI DEVELOPMENT – THE DUBAI MALL

Consultant:

DP ARCHITECTS PTE LTD.

Main Contractor:

JOINT VENTURE -

DUTCO BALFOUR BEATTY & GHANDI

CONSOLIDATED CONTRACTORS INTERNATIONAL CO.

MATERIAL SPECIFICATIONS:

1. BOLLARD: (12”SCH.40) O.D.323 9x9 53 thick stainless steel (304) pipe, hairline finish.
2. CAP: 6mm thick stainless steel (304) plate, hairline finish.
3. INNER CODE: (8” SCH.40) O.D 219.1x6.18mm thick stainless steel (304) pipe galvanise finish.
4. BASE: 10mm thick mild steel pate, galvanise finish.
5. ANCHOR: 8 nos. MKT wedge anchor B12-20/115, steel zinc-plated.
6. HEIGHT: 60mm from finish floor level.

BOLLARDS



STRUCTURAL STEEL WORKS

Project Title:
Dubai metro

MATERIAL SPECIFICATIONS:

1. CLADDING: 1.5mm thick stainless Stainless Steel (304) Sheet, Burushed Finish
2. BACK-UP: 1.5mm thick G.I Sheet Mill finish.
3. FRAME: 40x40x4mm thick MS angle.
4. HEIGHT: Varies

BOLLARDS



STRUCTURAL STEEL WORKS

Project Title:

DUBAI INTERNATIONAL AIRPORT-FOOD COURT AREA

MATERIAL SPECIFICATIONS:

1. CLADDING: 1mm thick stainless steel (304) sheet with relief dots, brushed finish.
2. CORNER: 30x30x1mm thick stainless steel (316) preformed angle angle, mirror finish.
3. DIMESION: 600x600x3380 millimeter high.

COLUMN CLADDING



STRUCTURAL STEEL WORKS

Project Title:
MEGA MALL- SHARJAH

MATERIAL SPECIFICATIONS:

1. LIFT SURROUND: 300 wide x 1.5mm thick stainless steel (316) cladding, satin finish.
- 2: SKIRTING: 200high x 1.5mm thick stainless steel (316) cladding, satin finish.

ARCHITRAVE



STRUCTURAL STEEL WORKS

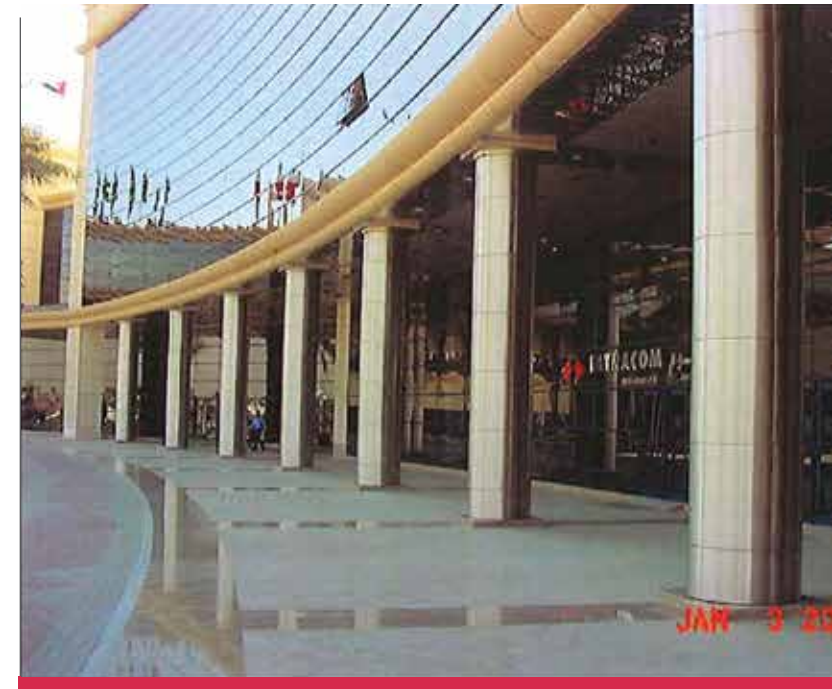
Project Title:

DUBAI AIRPORT FREE ZONE AUTHORITY-PHASE2

MATERIAL SPECIFICATIONS:

1. CLADDING: Stainless steel (AISI Type 316) 1.5mm thick sheet, brushed finish.
2. BACKING: 1mm thick G.I sheet, continuous, mill finish.
3. FRAME: Mild steel L-30x30x3mm thick angle, anti-corrosion painted finish.
4. CAPITALS: Stainless steel (AISI Type 316) 1.5mm thick sheet, brushed finish.
5. BASE: 20mm thick granite.
6. HEIGHT: 5850 millimeters from finish floor level.

COLUMN CLADDING



ALUMINUM FABRICATION

Project Title:

B+G+1+R INVESTMENT VILLA- Jumeira Second

Consultant:

ARA Design Engineering Consultancy

Main Contractor:

TAK Construction LLC

MATERIAL SPECIFICATIONS:

1. 50X50mm Alumium Tube w/ Paint Finish
2. 25X25mm Alumium Middle Support Tube .
3. 70X70mm Base Plate

ALUMINUM RAILINGS



ALUMINUM FABRICATION

SOLAR SHADING

Project Title:

B+G+1+R INVESTMENT VILLA- Jumeira Second

Consultant:

ARA Design Engineering Consultancy

Main Contractor:

TAK Construction LLC

MATERIAL SPECIFICATIONS:

1. Aluminum Main Runner Pipe
2. Aluminum Panel w/ Paint Finish
3. Supporting Bracket
4. HEIGHT: 6000mm from finish floor level.



ALUMINUM FABRICATION

Project Title:

Private Villas On Plot No 2163117 - Al Rashidiya

Consultant:

Arkiplan Architects, Engineering Consultants

Main Contractor:

TAK Construction LLC

MATERIAL SPECIFICATIONS:

1. 50X50mm Customized Aluminum Tube
2. 80X80mm Main Support
3. 3mm Thick U Channel
4. 3mm Dia PAN Screw

CUSTOMIZED ALUMINUM LOUVER



METAL WORK SERVICES

Project Title:
Residential Villa For Humaid Ahmed Matar Al Tayer

Consultant:
HSA Architects, Engineering Consultants

Main Contractor:
TAK Construction LLC

MATERIAL SPECIFICATIONS:

1. 60X60 mm Main Support Tube
2. 25X25mm Sub Support Tubes
3. Top MS Design

BOUNDARY WALL MS FENCE



ALUMINUM FABRICATION

Project Title:
Residential Villa For Humaid Ahmed Matar Al Tayer

Consultant:
HSA Architects, Engineering Consultants

Main Contractor:
TAK Construction LLC

MATERIAL SPECIFICATIONS:

1. 1.5mm Thick Aluminum Sheet
2. Fixing With Rivits
3. GI Holder Structure

AC DUCT CLADDING



ALUMINUM FABRICATION

Project Title:

G+1 Private 8 Villas - Rashidiya Dubai

Consultant:

Arkiplan Architects, Engineering Consultants

Main Contractor:

TAK CONSTRUCTION LLC

MATERIAL SPECIFICATIONS:

1. 40X80 3mm Thick Aluminium Tube
2. 3mm Thick U Channel
3. Brown Powder Coated Paint Finish
4. Covering 6mm Thick Polycarbonate Sheet
5. HEIGHT: 1800mm from finish floor level.

ALUMINIUM LOUVERS



ALUMINUM FABRICATION

Project Title:
Residential Villa Humaid Ahmed Matar Al Tayer

Consultant:
HSA Architects, Engineering Consultants

Main Contractor:
TAK CONSTRUCTION LLC

MATERIAL SPECIFICATIONS:

1. 40X40 3mm Thick Aluminium Tube Top And Bottom Post
2. 20X20 mmm Thick Aluminium Tube for Middle Post
3. 8mm Thick MS Base Plate
4. Power Coated Paint Finish

ALUMINIUM STAIRCASE RAILING



METAL WORKS

Project Title:

G+1 Private 8 Villas - Rashidiya Dubai

Consultant:

Arkiplan Architects, Engineering Consultants

Main Contractor:

TAK CONSTRUCTION LLC

MATERIAL SPECIFICATIONS:

1. 40X60 3mm Thick MS Tube Main Structure .
2. 4.5mm dia GI Mesh .
3. 6mm Thick MS Base Plate

AIR WELL GRILL



METAL WORKS

Project Title:

G+1 Private 8 Villas - Rashidiya Dubai

Consultant:

Arkiplan Architects, Engineering Consultants

Main Contractor:

TAK CONSTRUCTION LLC

MATERIAL SPECIFICATIONS:

1. 50Dia 3mm Thick MS Pipe.
2. 25Dia 2mm Thick Rungs
3. 12mm Thick Base Plate Fixing On Wall .

ROOF TOP CAT LADDER



METAL WORKS

GATE

Project Title:

G+1, PRIVATE VILLAS AT AL RASHIDIYA, DUBAI

Consultant:

Arkiplan Architects, Engineering Consultants

Main Contractor:

TAK CONSTRUCTION LLC

MATERIAL SPECIFICATIONS:

1. 50x50mm hollow tube powder coated black finish.
2. 4mm polycarbonate embossed sheet.
3. 25x3mm hollow pipe powder coated black finish.



METAL WORKS

Project Title:

PARK VIEW TOWER . JVC

Consultant:

NATIONAL ENGINEERING BUREAU

Main Contractor:

TAK CONSTRUCTION LLC



BRASS WORK

Project Title:
UAE JOURNALIST ASSOCIATION

MATERIAL SPECIFICATIONS:

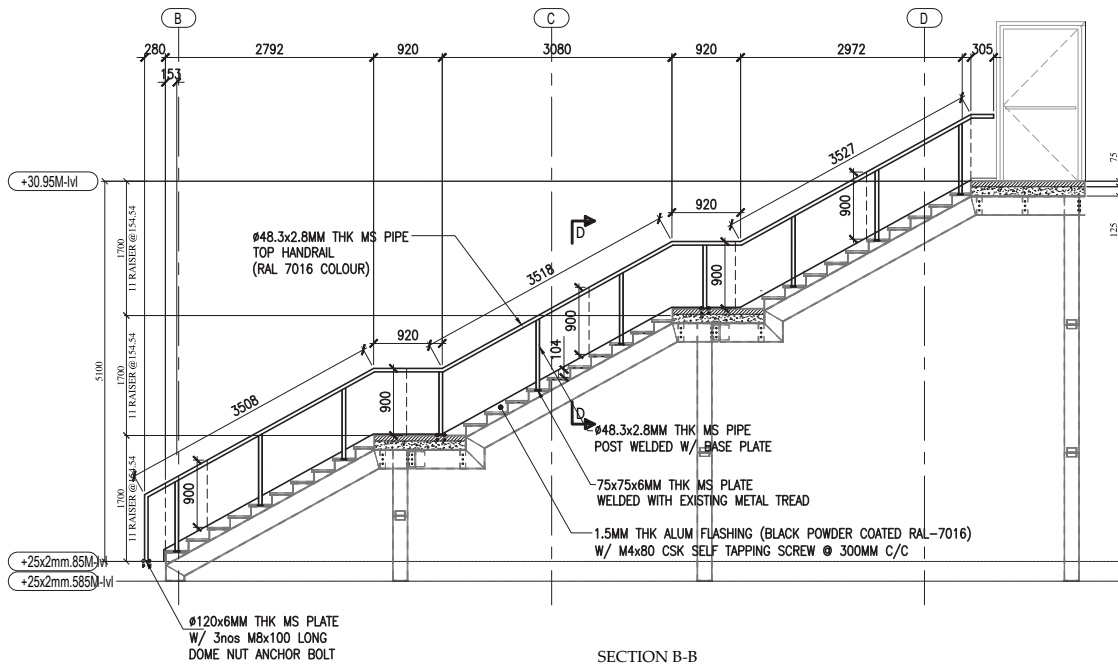
1: 10mm brass mashribiya cut with 1 micron gold plated finish.

ANTQUE BRASS FRAME



METAL WORK

EXPO LIVE PAVILION

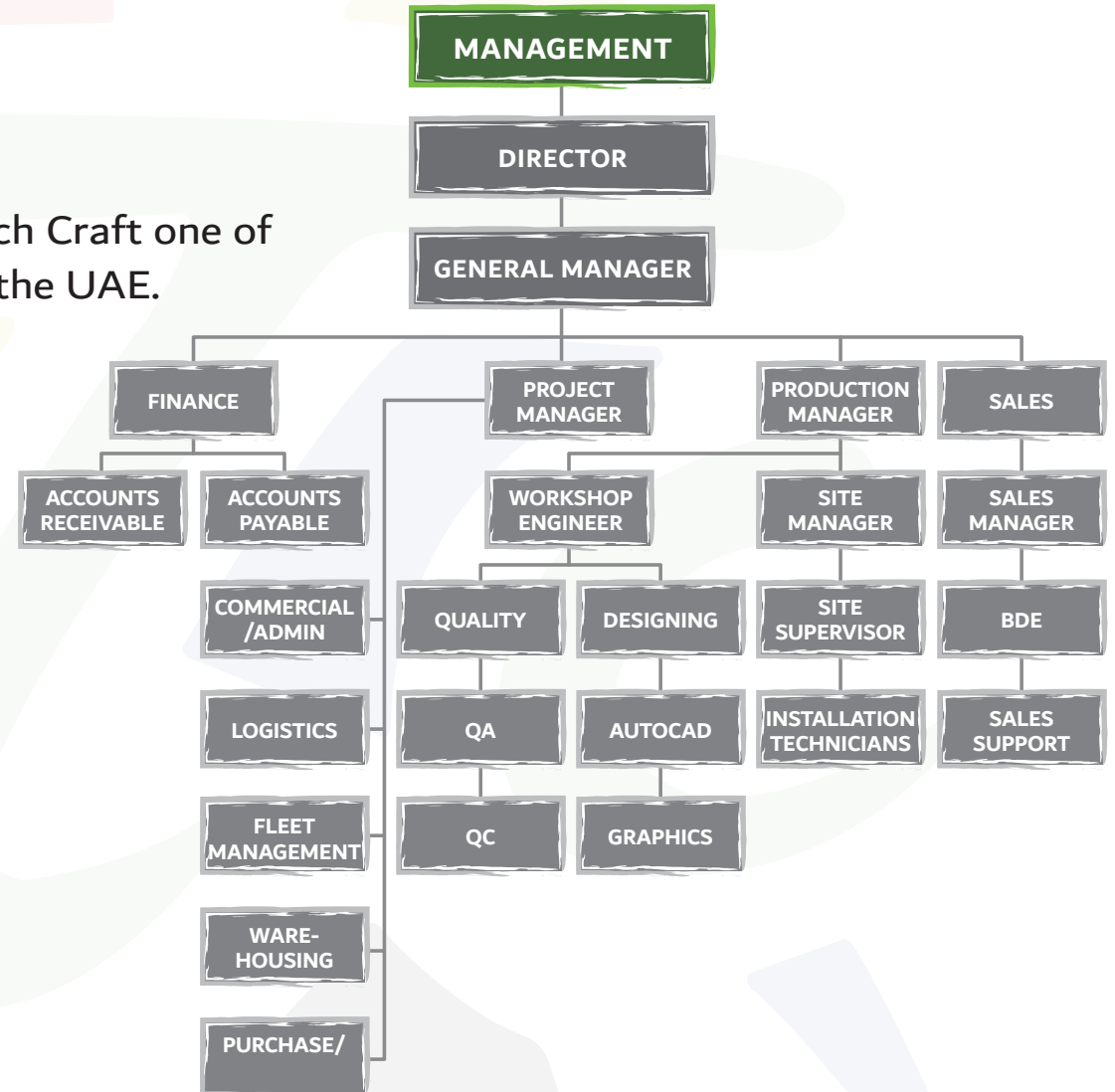


OUR CLIENTS



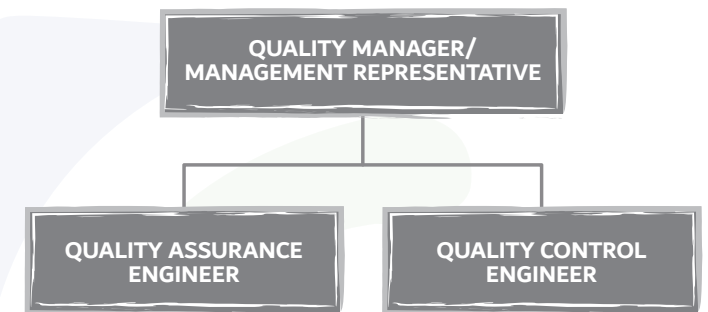
PRODUCTS ORGANIZATION CHART

Here are the people responsible for making Tech Craft one of the fastest growing digital printing services in the UAE.



OUR BELIEVE

- Quality is a work ethic and a way of life.
- Quality is a team effort with a deep-rooted commitment to the customer both external and internal.
- Quality is a pledge by every member of the Tech Craft family to deliver a product or service to the customer to highest-level of satisfaction – first time, every time – with reliable services and extended support, consistently giving good value to our customers and reasonable profit to the organisation.



LIST OF MACHINES



NAME	ORIGIN	QTY
Air Blower	China	1
Air Buffing Machine	China	1
Air Sander Belt	China	3
Aluminum Cutting Machine	Japan	2
Angle Drill Machine	Japan	1
Arc Welding Machine	Finland	3
Bench Cutter	China	1
Bench Cutter (Mounting Type)	Japan	1
Bench Drilling Machine	Taiwan	1
Buffing Machine (Grinder)	China	2
Charger Drills	Japan	4
CNC Router	Germany	2
Compressor	China	2
Cordless Drill	Japan	3
Dryer Rack	Korea	5
Dry Booth	Korea	1
Grinding Machine	Japan	7
Hand Cutter	Japan	1
Hand Router Heavy Duty	Japan	4
Hand Router Light Duty	Japan	2
Heater	Japan	4
Heavy Duty Grinder	Japan	1
Hot Air Blower	China	2
Hydraulic Aluminum Machine	China	1

NAME	ORIGIN	QTY
Jigsaw Machine	Japan	2
Lamination Machine	China	2
Digital Print Machine	Japan	3
Laser Machine(Acrylic)	China	1
Laser Machine(Metal)	Swiss	1
Letter Bending Machine	China	2
Magnetic Drill Machine	Japan	1
Mig Welding Machine	Finland	6
MS Cutting Machine	Japan	1
Nail Gun	Japan	2
Paint Buffing Machine	Japan	1
Paint Gun	Korea	1
Plotter Machine	Japan	2
Power Drill	Japan	9
Profile Cutting Machine	Turkey	1
Sanding Machine	Japan	3
Sanding Machine (Air)	China	4
Shearing Machine	Japan	1
Sheet bending machine	Turkey	3
Soldering Machine	Turkey	2
Spray Booth	Korea	1
Stapler Gun	Japan	1
Warga Cutter	China	1
Wood Cutting Machine	Japan	1

COMMERCIAL LICENSE

الرخصة الصناعية
Industrial License

License Details / تفاصيل الرخصة					
License No.	899715	رقم الرخصة			
Company Name	TECH CRAFT METAL INDUSTRIES L.L.C	اسم الشركة	شركة كرافت للمصنوعات المعدنية ذ.م.م		
Trade Name	TECH CRAFT METAL INDUSTRIES L.L.C	الاسم التجاري	شركة كرافت للمصنوعات المعدنية ذ.م.م		
Legal Type	Limited Liability Company(LLC)	نوع الشركة	شركة مساهمة محدودة		
Expiry Date	13/08/2022	تاريخ الانتهاء	Issue Date	14/08/2020	تاريخ الإصدار
O&B D-U-N-S®	0	رقم تدفيس	Main License No.	899715	رقم الرخصة الأم
Register No.	1500848	رقم السجل التجاري	DCCI No.	344709	محدودة الفارعة

License Members / الأعضاء			
Share %	Role	Nationality	Name
	Manager / مدير	India / الهند	Praveen Kumar Amarnath

Beneficiary Owner consent of this license has been signed on 23/08/2021. For more information or to know the Beneficiary Owner please visit any DED service center or DED eServices website.

تم توقيع إفادة المستفيد المطلق لهذه الرخصة بتاريخ 23/08/2021. لتزيد من المعلومات أو لمعرفة المستفيد المطلق يرجى التوجه بزيارة مركز خدمات أو الموقع الإلكتروني للخدمة الاقتصادية.

License Activities / نشاط الرخصة التجارية			
Building Metal Products Manufacturing			
Address / العنوان			
Phone No	التلفون	P.O. Box	صناديق بريد
Fax No	فاكس	Parcel ID	رقم القطعة
Mobile No	هاتف محمول	صندوق رقم 08 ملك حلال حديد عبدالله المنجلى : مجمع دبي للتصنيع الفولاذي - دبي	
Email / بريد إلكتروني			
Remarks / ملاحظات			

Print Date 29/08/2021 10:55 تاريخ الطباعة Receipt No. 14032309 رقم الإيصال

يمكنك الآن تجديد رخصتك التجارية من خلال إرسال الرسالة القصيرة القصيرة أرسل رقم الرخصة إلى 0909 (إم-إيس-إيس) للحصول على إذن التجديد
Now you can renew your trade license by sending a text message (SMS). Send your trade license number to 0909 (Duf Etisalat) to receive payment voucher.

Get FREE access to Zoho One for the first year
احصل على Zoho One مجاناً لمدة سنة واحدة

www.dubaided.gov.ae
www.dubaided.gov.ae
www.dubaided.gov.ae
www.dubaided.gov.ae

www.dubaided.gov.ae
www.dubaided.gov.ae
www.dubaided.gov.ae
www.dubaided.gov.ae



Tech Craft

Metal Industries LLC

Tech Craft Advertising & Signs LLC

Plot No: 597-0732

Dubai Investment Park – 2,

P. O. Box: 487131

Dubai – UAE

Email ID: info@techcraft.tech

Tel: 971 4 2880945

Web: www.techcraftdubai.com

